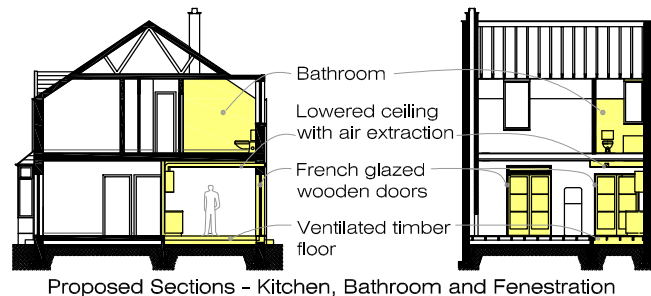
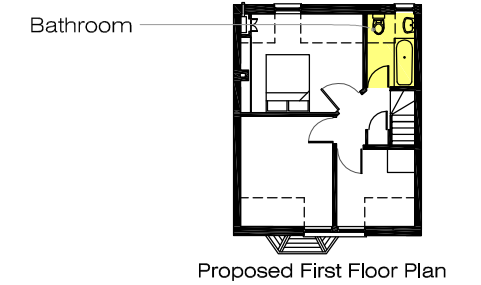
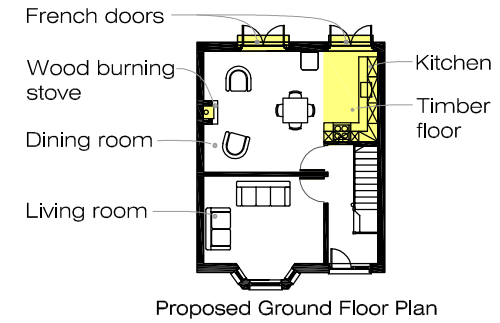
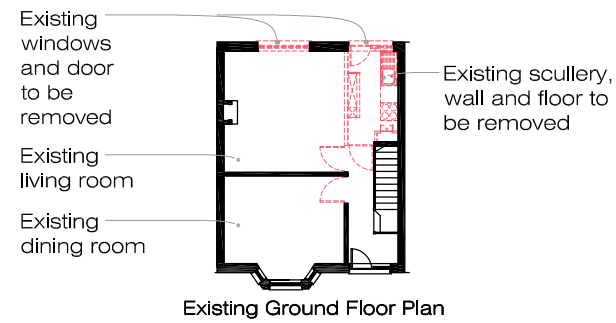


# GRANTON ROAD, EDINBURGH

Remodelling of Ground floor and new fenestration



The clients live in a three bedroom mid terrace house in Edinburgh. The house was built in 1925. On the ground floor there is currently a small scullery, a living room and a dining room. The scullery is insufficient to support a family kitchen. With two children, the clients need a larger kitchen but wish to retain their two reception rooms. The proposals remodel the existing living room and scullery into an open plan kitchen-dining room. The natural light and connection to their private garden will be improved with the introduction of two sets of matching French doors and a clerestory window. The dining room also includes the installation of a wood burning stove. Psychological boundaries to the kitchen will be formed with a family table and a feature free standing fridge freezer. The first floor bathroom suite is to be replaced. Planning has been negotiated and the proposals are now lodged with Building Standards for approval.